

AEIC 2004

a

a

:

*

a

/...

:

a

a

()

a

a

The sustainable urban development between conventional and alternative planning concepts

Abstract:

In spite of the new trends and serious challenges that face the Middle East and the Arab World in particular, the conventional planning concept (based on large cities domination) still widely spread in our society even it is not up to date any more. This conventional planning concept does not compensate with the national strategy announced on 1997 of habitation off the narrow Nile valley. Based on the conventional planning concept, 44 towns settlements have been established to hold 20 millions of population by 2017, that would be a 450 thousands per each town in average. That shows a clear conflict with aims of the national development strategy and may cause a national security problem as well.

Therefore, this paper analyzing the conventional planning concept and the relation between the sustainable national development and the urban fabric in the new perspective that take in consideration the new requirements of political, urban, environmental, economical, and social changes. An alternative planning-concept would be the proper solution that faces the recent and future challenges to achieve sustainable urban development with emphasizing the importance of that to the national security.

a

:

a a

a

a

. []

a

" :

"

a

a

.

.

:

a

.

:

a

.

:

a

.

:

a

a

a

(

)

. []

% a a

/ a / % a

a

a a

a

a

a

!!!! ...

()

a a %

() ...[]

.

.... a a

... a a

... a ...

... % %

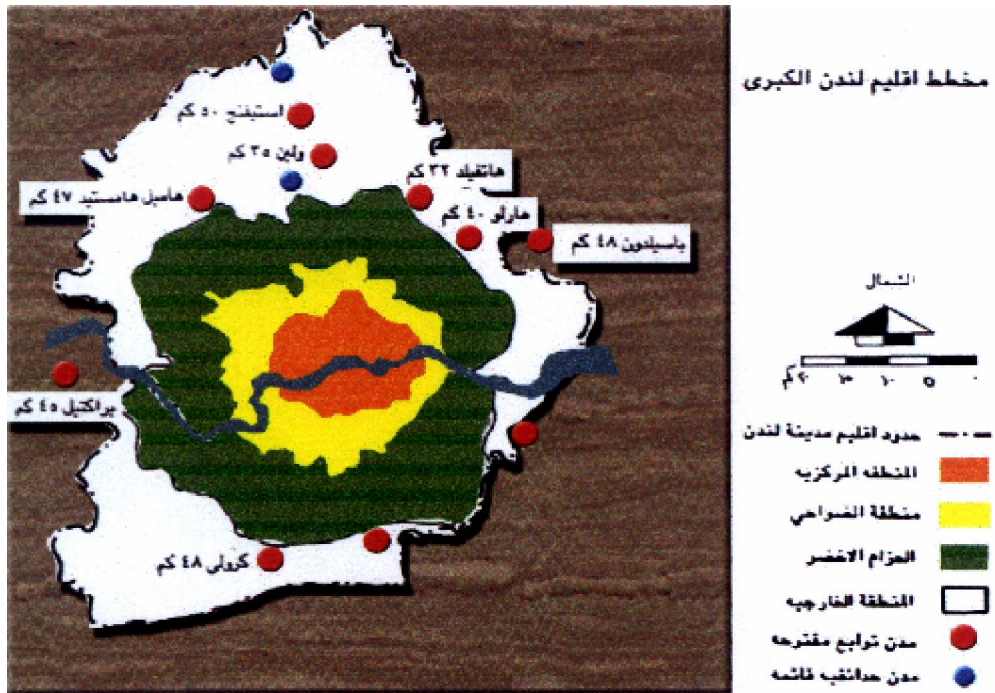
.

a a

.

a a a

()



() :

[] :

:

:

()

-

a

a

() :

	()			
-	-	-		-
-	-	-		-
-	-	-		-

[] :

a

a

a

a

() a
 .
 :()

				a	a	a	a		
									()
									()
									()
									()
									()
									()
									()
									()
									()

[] :

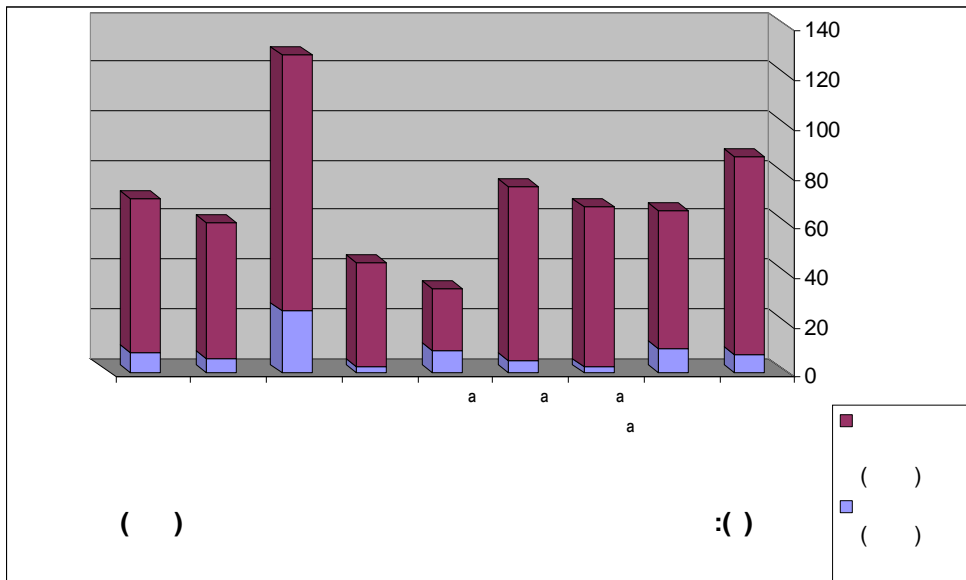
: ()

a %

% - %

a

.()



a

a a — •
a .
a a
% a %
a a
.
)
a a (.
% a)
/ .
/ / /) ()
/ / / / /

(/)	:()

[]:

. — •
.
() : :
.
a a
•
• • • •

:()

						()
						()
						()

[]

:

()

%

%

Seoul

:

:

a

()

a

()

Ilsan

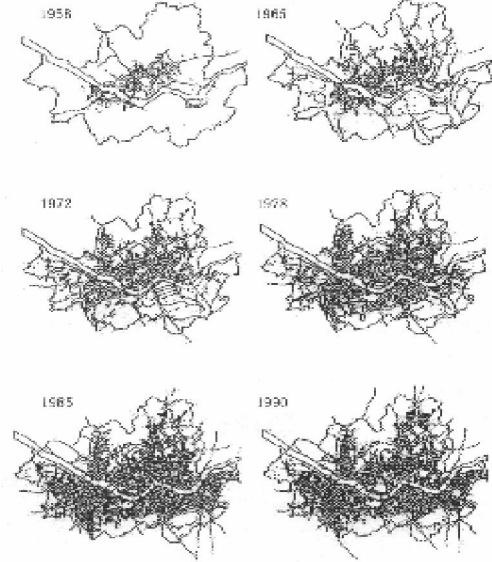
Pundang

: a

.Sanbon

Pyongchon

Chungdong



(-)

()

Source: Seoul Metropolitan Government. The Comprehensive Plan for Seoul,1997.

Seoul Metropolitan Region (SMR)

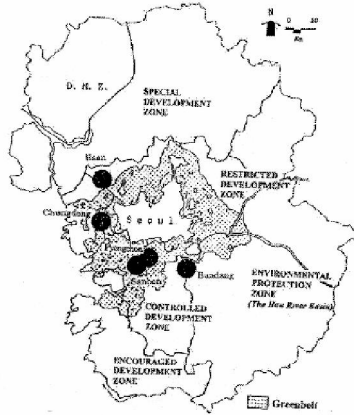
:()

						/
						A(Seoul)
						B(Kyonggi)
						(A+B) SMR

Source: Economic Planning Board, Population and Housing Census, various years.

()
 (new town – in – town)

Ilsan Pundang
 ()



Source: Ministry of Construction, 1984

:()

.(Seoul)

:()

	Sanbon	Pyongchon	Chungdong	Ilsan	Pundang	
						%
						%
						%

Source: Korea Research Institute for Human Settlements (1997) and Lee and Kim (1995)

% — a

% a Pundang a a (a)

SMR ()

% % % a

(SMR) a (new town – in – town) a

%

()

a

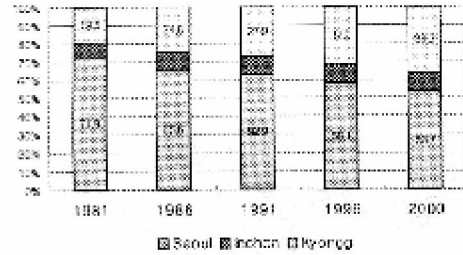
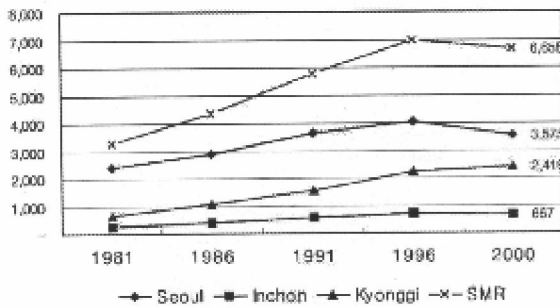
)

. [] % % %
 % % %

:()

	Sanbon	Pyongchon	Chungdong	Ilsan	Pundang	
						(Seoul)
						(Incheon)
						(Kyonggi)
						(Own New Town)
						(Outside SMR)

Source: Chung and Lee (1996), P. 60.



Source: National Statistical Office, Report on Business Establishments Census, 1981, 1986, 1991, 1996, 2000

. () : ()

:

SMR

a
 (-Suwon -Pyongteak Seoul) - (Seoul - Incheon) -
 Seoul-Koyang- Seoul-Songnam a
 Seoul-Ichon Paju

a

()

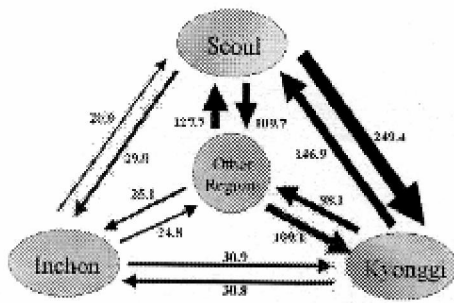
a

a

. []

()

Inter-regional migration pattern (1995-1999) (Unit: 100,000)



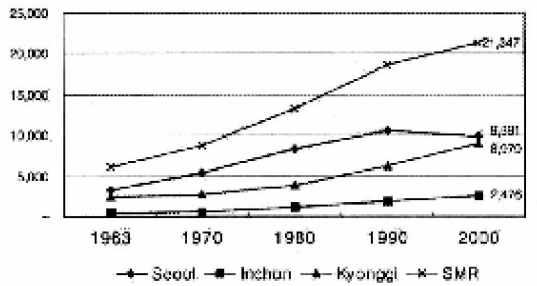
Net in-migration by regions (Unit: 1000)



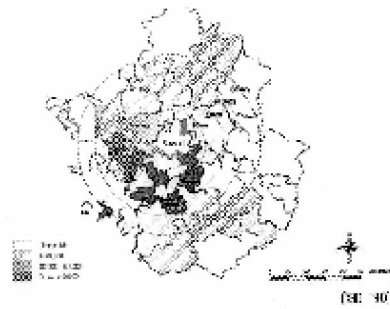
Source: National Statistical Office, Internal Migration Statistics, 1982-2000.

:()

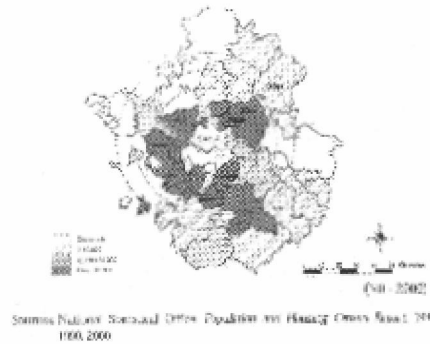
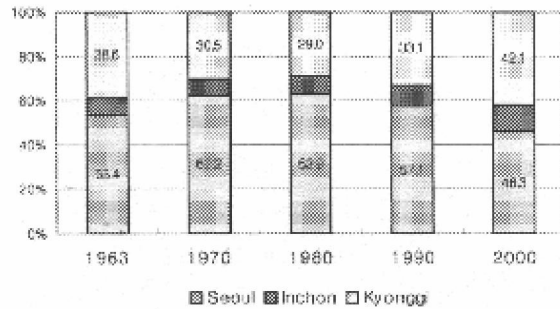
No. of population by regions (Unit: 1,000)



Population growth patterns



Population shares of the SMR by regions



Source: National Statistical Office, Population and Housing Census Result, 1990-2000.

:()

:

:

a

a

a

a

a

a

.% () %
a a

a a

Dimona

a a

.[]

.()

a

:()

			()
-	-	-	-

[]:

%

.

:

a

a

:

%

a

.[]%

()

()

-

-

-

a

a

-

a

a

.

.

:()

											()
											()
											()
											()

[]

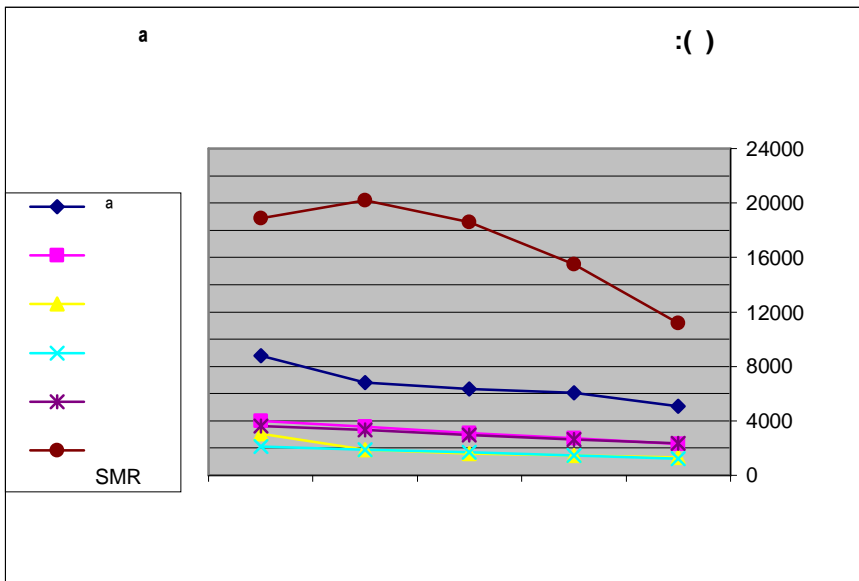
:

... a
 ...
 a
 . a
 : ()

a							a

[] :

: a
 : a
 -
 %
 . a
 . ()
 a



a
 :
 .

a

a

a ()
a

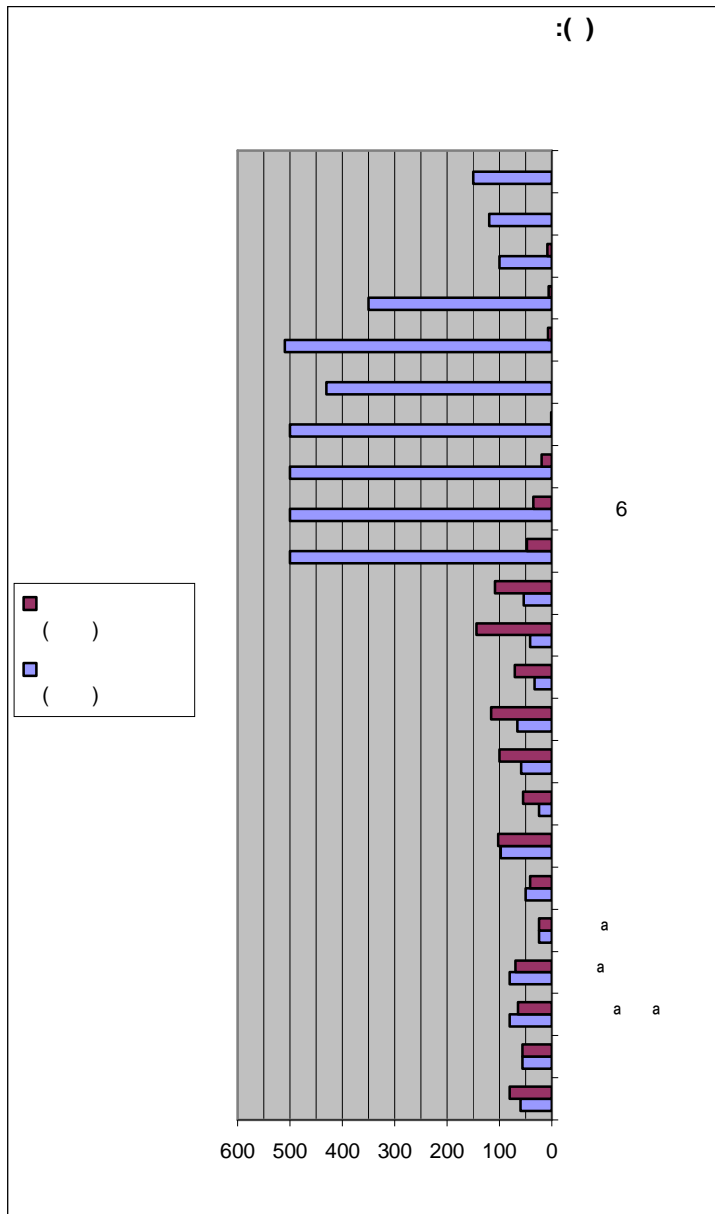
()

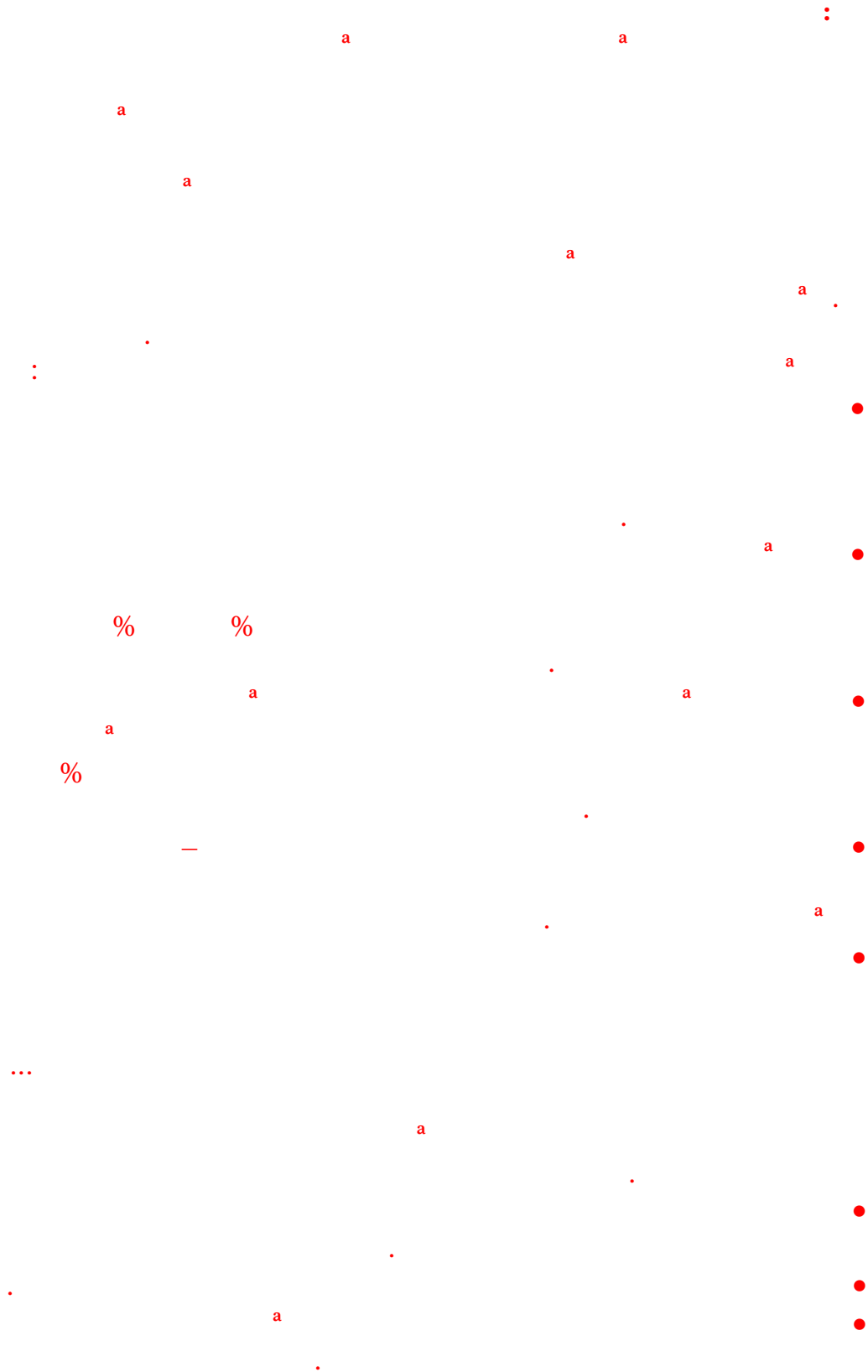
a

a

a

()





9. Darwrsh, Mohammed – Hafez, Ghada, **The Competition in Attracting Investments and Its Impact on Developing New Cities**, Al- Azhar Engineering 7th International Conference, April 2003.
10. Fathy, Mohammed, **The Israeli Dvelopment Experiment in the Southern Share of Occupied Palestine**, Al- Azhar Engineering 7th International Conference, April 2003.
11. El-Kholei, Ahmed, **A Strategy for Housing Reform in Egypt**, Arab States Regional Conference on National Shelter Strategies, 1992.
12. El-Nahas, Nabil Ashry, **A Suggested Strategy Towards An Effective Treatment of Housing Crisis in Egypt**, The Second international conference for development and environment in the Arab word, 2004.
13. El-Nahas, Nabil Ashry & Eissa, Hesham, **The Housing Policy As Means of The Oriented Investment "An Approach to Develop The Occupation Rate in The New Towns**, Al-Azhar Engineering 7th International Conference, April 2003.
14. Kim – Kwang – Joong and Yoon, Il-Sung, **Urban Renewal and Transformation of 20th Century Seoul**, in SDI (ed.) Seoul Twentieth Century: Growth and Change of The Last 100 Years, Seoul: Development Institute in Korean, 2001.
15. League of Arab States, **Arab Declaration on Sustainable Development for Human Settlements** (Rabat Declaration), December 1995 on the occasion of the UN conference on human settlements (HABITAT II).
16. Lee, Ki – Suk, **Urban Growth of 20th Century Seoul: from preindustrial city to global city**, in SDI (ed.) Seoul Twentieth Century: Growth and Change of The Last 100 Years, Seoul: Development Institute in Korean, 2001.
17. Peter Hall, **Urban & Regional Planning**, Georg Allen and Unwin (London) 2nd edition 1990.
18. Won-Yong Kwon & Kwang-Joong Kim, **Urban Management in Seoul, Policy Issues & Responses**, , Seoul Development Institute, 2001.